

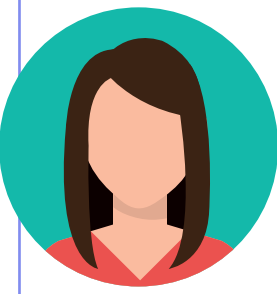
# WHY TO TRAIN YOUR EMPLOYEES REGULARLY

Happiness at work increases productivity and leads to higher engagement. Happy employees are more present, they pay more attention to the needs of customers and they are more alert to the company's processes and systems increasing productivity and profitability.

## BENEFITS OF REGULAR EMPLOYEE TRAINING

- ✓ Clear standards help employees provide good customer service.
- ✓ Lower likelihood of falling for phishing scams.
- ✓ Ability to address policy violations quickly.

## SOME OF THE MOST PRESSING ISSUES IN RECENT TIMES ARE:



**\$8.5 TRILLION**

By 2030, the estimated cost of a talent shortage and skills gap in the United States alone will be \$8.5 trillion.<sup>1</sup>



**40%**

Over 40% of workers worldwide are considering quitting their jobs.<sup>2</sup>

### SECURITY CONCERNS

Humans are usually the weakest link in your security strategy and can expose vulnerabilities for the following reasons:

- Poor decisions resulting from heavy workloads.
- Distractions associated with working from home.
- Insufficient knowledge of red flags to look for.
- The forgetting curve, which is just as steep as the learning curve.

## HOW CAN THESE ISSUES BE ADDRESSED?

Proper onboarding and training help overcome the above difficulties and prepare your organization to provide a superior customer experience.



The more knowledgeable your employees are and the longer they stay, the better they can serve your customers.



Investment in training "hardens" the human firewall, aka your employees, who you place a great deal of faith in.

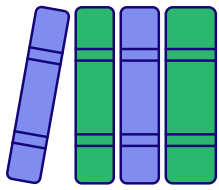


Spending on human resource training yields a high return on investment. Preventing even a single phishing attempt can save your company thousands.

## THE SOLUTION: LEARNING MANAGEMENT TRAINING

Deploy a learning management system that incorporates phishing training and allows you to modify your instance to include whatever you want and construct a personalized training.

### GET ACCESS TO FEATURES SUCH AS:



**Structured learning**



**Multiple languages**  
(perfect for global teams)



**Automated reminders**



**Engagement documentation**  
(helpful when you're required to prove every learner's training completion)



**Centralization of information**  
(ensures that critical training is not lost if crucial team members move on to other organizations)

IMPROVE PHISHING PREVENTION BEST PRACTICES AND GET ACCESS TO A POWERFUL **LEARNING MANAGEMENT PLATFORM**

**CONTACT US TODAY** to find out if this service is a fit for your company

